

Production-level equipment and applications for on-demand IT skill building

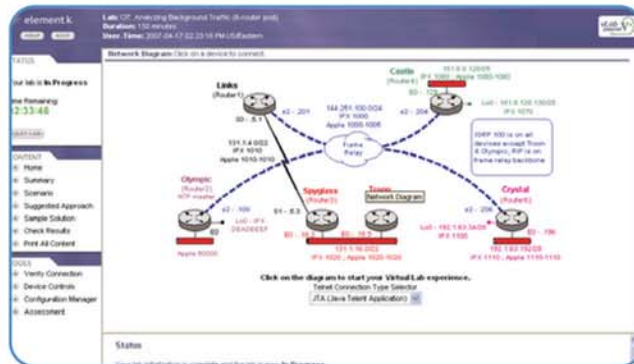
Organizations risk profit-killing downtime or worse when their networks fail, but few can afford expensive production-level practice equipment to build their IT staff's expertise. How can you be sure your IT department will achieve mastery, without putting your own production equipment at risk?

Element K® delivers vLab® technology—the first scalable, hands-on e-Learning system that provides anytime access to live networking hardware and software—dedicated exclusively to IT skills enhancement in a risk-free environment. Unlike in simulations, vLab users command actual devices as they are challenged to solve real-world internetworking problems based on their skill level.

Multiple delivery styles and the widest selection of labs

Only vLabs combine self-study and classroom learning modalities along with custom lab authoring capabilities to accommodate your unique needs. Now you can provide networking experience, certification preparation, and custom application training to your employees worldwide, without purchasing or maintaining expensive equipment. vLab products include:

- Cisco® based vLabs - Remotely configure and control real working routers and switches. Includes CCNA®, CCNP®, and other Cisco certifications.
- Microsoft® based vLabs - Connect online to actual Windows® Vista™, 2003, and XP networks for MS certifications such as MCSE, MCSA, and others. Also supports XML, SQL, SSAS, Visual Studio .NET™, and .NET™ Framework, along with many other Microsoft technologies.
- Other Client-Server-based vLabs - Train for most CompTIA®, Linux, programming, and security certifications.



vLab within the "Cisco Internetwork Troubleshooting CIT v5.0 Revised" course explains how to analyze background traffic in a 6-router pod.

Total support for any remote lab initiative

Element K provides a host of services to ensure your virtual training integrates seamlessly with KnowledgeHub™ or any third-party learning management system. We will work with your subject matter experts to create custom lab content that reflects your brand and proprietary applications. We also feature a custom network of servers for organizations that require a dedicated environment.



To find out more:

Phone: +61 2 8249 8142

Email: info@epsilearning.com

www.epsilearning.com

Key features and benefits

Deliver 24x7 access to your IT department on over 1000 labs, supporting all major Cisco, Microsoft, CompTIA, and Linux certifications. Protect your servers and your business from risk with our versatile, cost-effective, and easy-to-implement vLabs solution.

- Access labs with only an Internet connection and web browser
- Supports self study and classroom session learning models for different training needs
- Train with high fidelity labs and real IT gear, with support for a dedicated environment
- Localized language content for a global population
- Shadowing capabilities for vlab classroom sessions
- Control the content management workflow via robust content and image authoring tools

Our competitive value

Element K vLabs provide a turnkey, end-to-end solution for enterprises needing to deliver both self-study and classroom virtual learning models to a geographically diverse population. Custom labs including client content and images as well as dedicated environments for specific user communities are available for both learning models. Our extensive library offers current and highly effective Microsoft, Cisco, and Linux labs and training for operating systems, development tools, mail clients, and more.

